

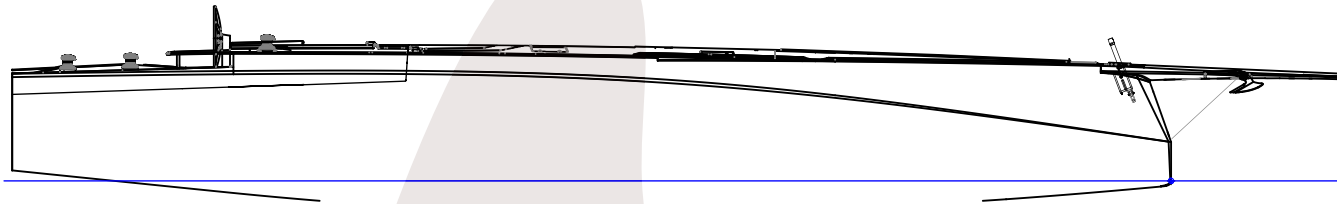


THE CONCEPT

Designed to re-define the racer cruiser landscape the **Neo 570 c** is conceived to impress in all areas through creative thinking, innovation and technology.

The **Neo 570 c** embodies the very latest development in racer-cruiser design from the Carkeek drawing board.

Hot off the heels of the super-successful award-winning (World Sailing Yacht of the Year) Fast 40 40ft Ran 7, and the more recent Carkeek 52 Ran 8 and using the TP 52s as the benchmark to be improved on without the constraints of box rules, the radical progressive hull form has demonstrated that it is clearly more efficient in terms of the overall balance and handling, providing a more stable platform in terms of pitch in a seaway.



The **Neo 570 c** is conceptualised and designed to offer owners pure **racing performance** combined with **cruise comfort**. luxury in a lighter, stiffer, faster, higher stability platform relative to other performance cruiser racer designs, but with increased level of control, reliability and flexibility to mode the boat seamlessly between racing and cruising, along with an emphasis on ergonomics and comfort offshore.

One of the more impressive features on deck to indicate the Neo 570's potential as a serious cruising boat is the lightweight garage space built below the cockpit floor and accessible through the transom. This space can handle a 3,5 mt RIB or other craft. There is also a dedicated locker for a liferaft when this is needed on long offshore races.



YACHT DATA

MEASURES & WEIGHT

- Length (LOA): 17,50 mt
- Beam (Bmax): 5,30 mt
- Draft: 4,20 - 2,70 mt (Lifting keel)
- Displ: 11.500 - 11.900kg (Lifting keel)
- Keel: 5.300 kg
- Water Ballast: 600 - 800 lt
- Rudders: Single / Double

ENGINE/OMOLOGATION/CREW

- Engine: Volvo D-2-75 S-drive 75 hp
- CE Category: A-12 / B-14 / C-16

WATER & FUEL

- Water Tanks: 400 lt
- Fuel Tanks: 400 lt

SAIL PLAN

- Main (112m²) + Jib (83m²): 105 m²
- Assymetric: 350 m² A0: 250 m²
- Staysail: 35 m²
- ORCì GPH: 433 IRC TCC: 1417



VERSIONS



NEO 570c 2x2

- Berts: min 6 max 10
- Cabins: 2 double
- Bathrooms: 2 with showers
- Kitchen : Induction 4 burners
- Kitchen sink: Double
- Oven: Combi electric + microwave 60cm
- Bow Table: 10 persons
- Wardrobes: 4
- Conditioner: Yes
- Water maker: 60lt/h
- Tender: 3 mt (stored with engine)

NEO 570c 2x2 Race



NEO 570c 3x3



NEO 570c 3x3 V2



DECK DETAILS



STRUCTURAL INTERIORS

The time and effort spent on designing, fabricating and installing interior design elements was also proven effective.

The relatively open interior layout with centre aisles and an open composite space frame rather than central main bulkhead makes sail stowage easy, and well-crafted and positioned storage lockers kept the below deck clutter to a minimum whilst facilitating easy movement fore and aft without having to climb through mountains of sail bags. The centreline nav station has does not give any weight bias while working on either tack or gybe and has two screens and an articulating seat.

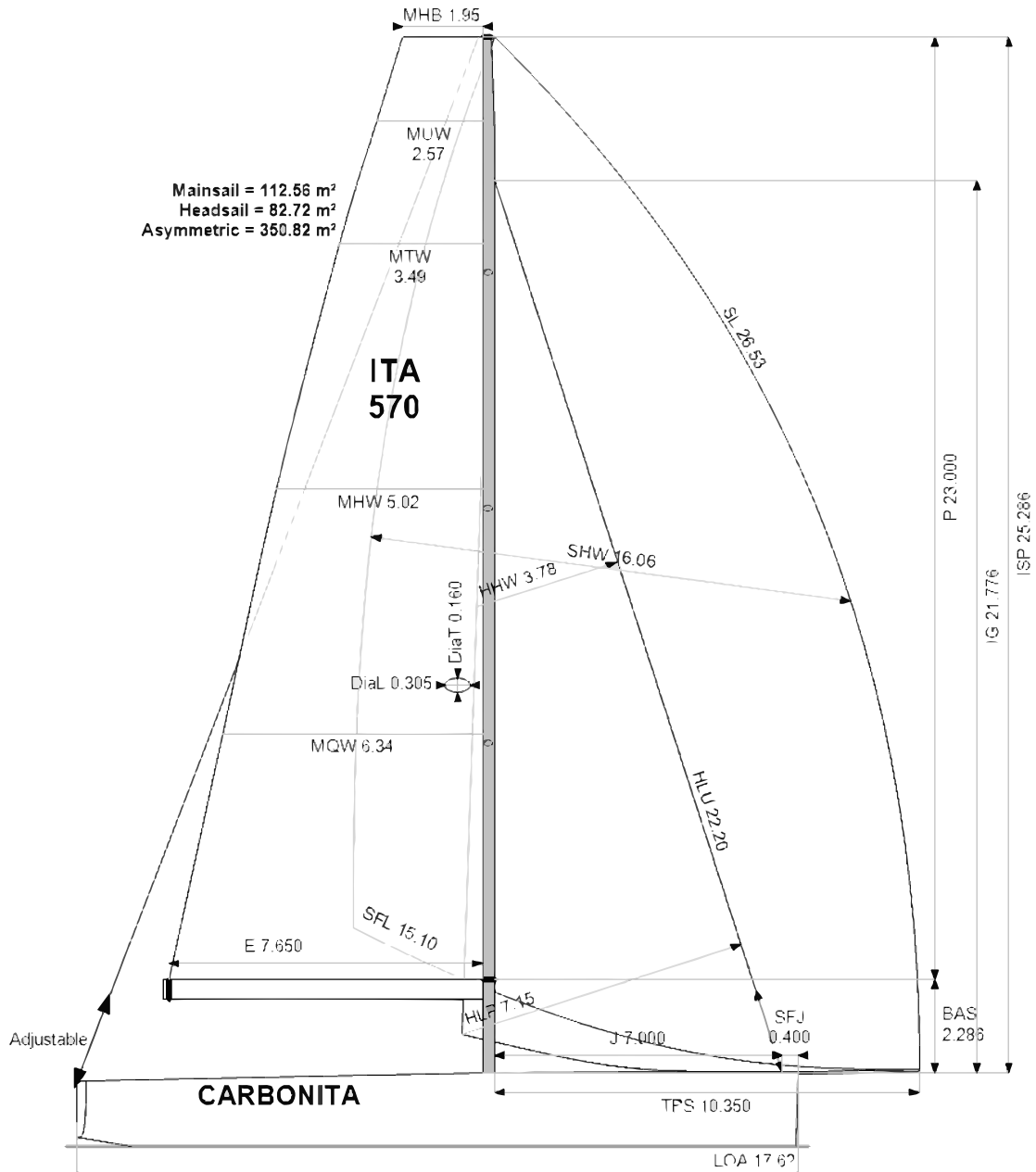
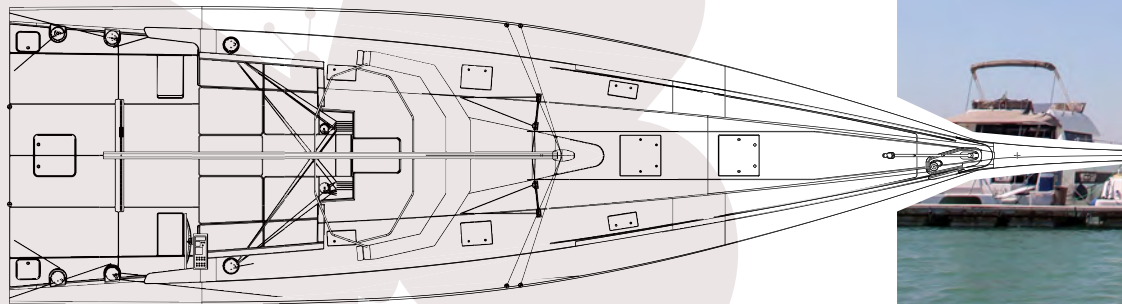
Rather than having racks of framed pipe berths in a black carbon cave, the Neo 570 has its interior painted in a light colour, with deck hatches and windows to provide light, fitted with proper fixed berths that are lightweight and strong (they are carbon after all) and designed to drop down to be seatbacks when not in berth use. There are accessible hanging lockers for wet gear rather than having them hang in the two enclosed heads



SAIL PLAN

With the enormous attention to detail given by Neo Yachts build team, Carbonita’s measured specifications came very close to expectation. The displacement on their ORCi certificate is 11.9 tons, stability index is 136.5, and 2022 all-purpose handicap is 386.3 sec/mile. By comparison, one of the newest-built and measured TP 52s is 7.2t, has a stability index of 142.5 and an APH of 382.6 sec/mile. Their rated VMG upwind and downwind boat speeds in both eight kts and 14kts are nearly the same as that of Carbonita. And this is with the same crew weight of 1200kg on both boats.

Using these metrics it would seem that Neo Yachts and Carkeek have done it: created a boat with the performance of one of the most successful raceboat classes in history that has the creature comforts of a well-appointed cruising boat.



APH: **386.3** CDL: **16.559**
GPH: **433.9** CertNo: **22/2**

BOAT	
Class	Neo 570
Designer	Carkeek
Builder	Neo Yachts & Comp.
Age date	05/2022
Series date	05/2022
Offset file	neo570.off
Data file	ITA570

HULL	
Length Overall	17.618 m
Maximum Beam	5.230 m
Draft	4.207 m
Displacement	11,906 kg
DLR	2.6300
IMS Division	Cruiser/Racer
Dynamic Allowance	0.015%
Age Allowance	0.000%

PROPELLER	
Installation	Strut
Type	Folding 2 blades
Diameter	0.530m

CREW	
Maximum weight	1,200 kg
Minimum weight	900 kg * when applied
Non Manual Power	Sheets
Crew Arm Extension	

SAIL AREAS (m²)		
	Measured	Rated
Mainsail	112.56	115.02
Headsail Luffed	82.72	82.72
Headsail Flying		
Symmetric		
Asymmetric	350.82	350.81
(1 asymmetric(s) with SHW/SFL < 85%)		

STORM SAIL AREAS (m²)	
Trysail	30.80
Storm Jib	23.99
Heavy Weather Jib	64.76

SAIL LIMITS	
Headsails	8
Spinnakers	6

STABILITY	
Righting Moment	610.1 kg-m
Stability Index	136.5