



 neo₄₃₀
Roma

YACHT DATA

MEASURES & WEIGHT

- Length (LOA): **13,06 mt**
- Length (LWL): **11,80 m**
- Beam (Bmax): **4,06 mt**
- Draft: **3mt or 1.6 (if lifting keel)**
- Displacement: **5700kg**
- Keel: **2500 kg**

ENGINE/OMOLOGATION/CREW

- Engine: **Saildrive 30 hp**
- CE Category: **A - Ocean**
- Crew Max: **10**

WATER & FUEL

- Water Tanks: **200 lt**
- Fuel Tanks: **100 lt**

SAIL PLAN

- Main (60m²) + Jib (45m²): **105 m²**
- Sail Area Downwind (Gennaker): **230 m²**
- Assymmetric Spi Area: **170 m²**



TWO SOULS



is the magic balance between all-round performances and the possibility to have nice interiors with enough space and displacement for a lifting keel still in a reasonable size of yacht to be sailed in shorthanded. For those who want to keep sportive (but still well finished) interiors, we will add the saved weight in the keel for a outperforming IRC/ORC RACER



BALANCED PERFORMANCE CRUISER

TWO RUDDER & LIFTING KEEL



POWERFUL RACER CRUISER

ONE RUDDER & FIXED KEEL

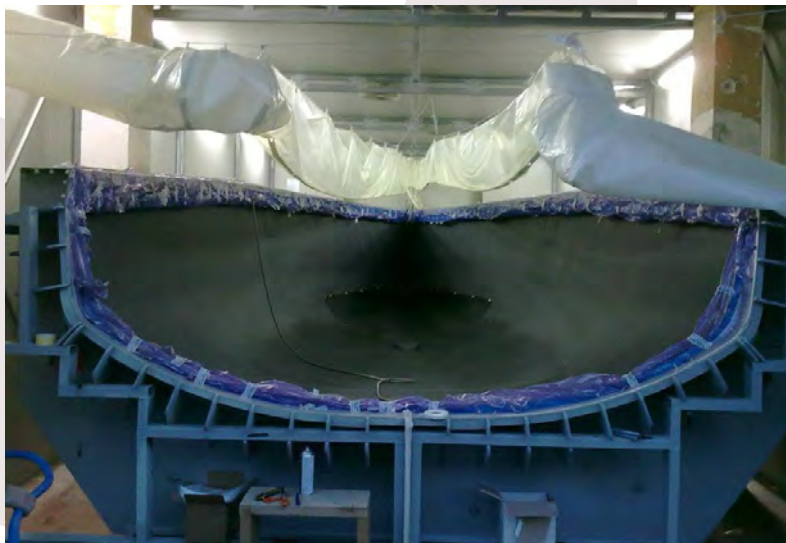


STATE OF THE ART FULL CARBON CONSTRUCTION

- Direct female mould
- Prepreg and infusion technology
- Epoxi resin cured at 70°
- Keel weight is 50% of total displacement
- Category A yacht
- Multiaxial and unidirectional carbon fibers

Design by:

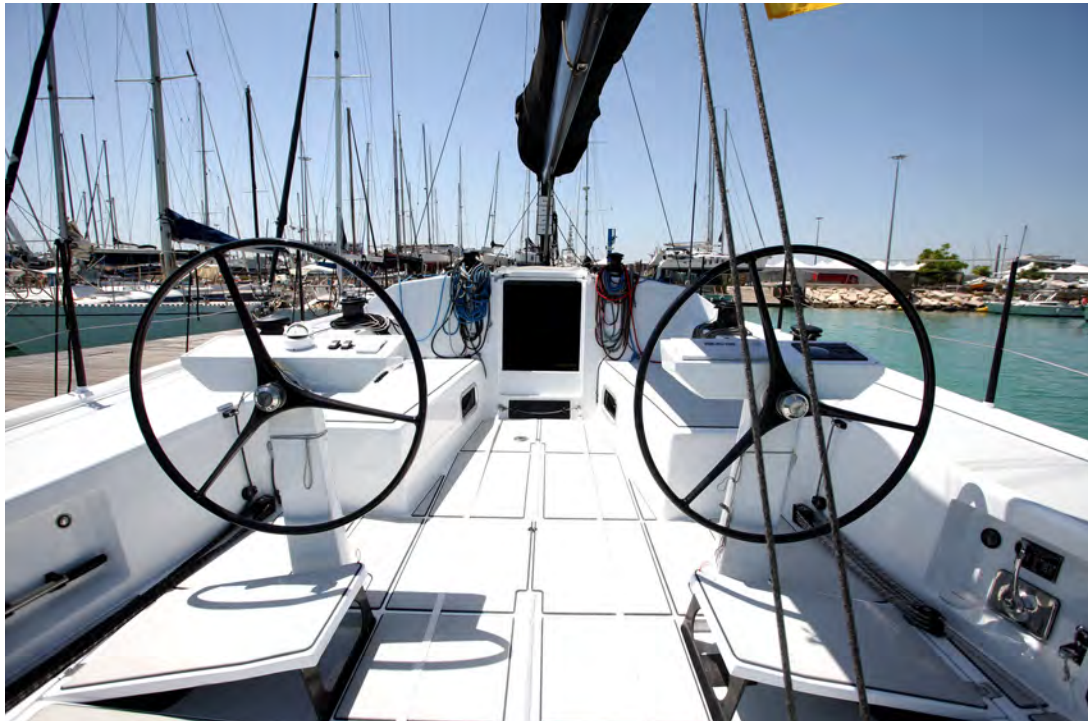
ceccarelli
YACHT DESIGN



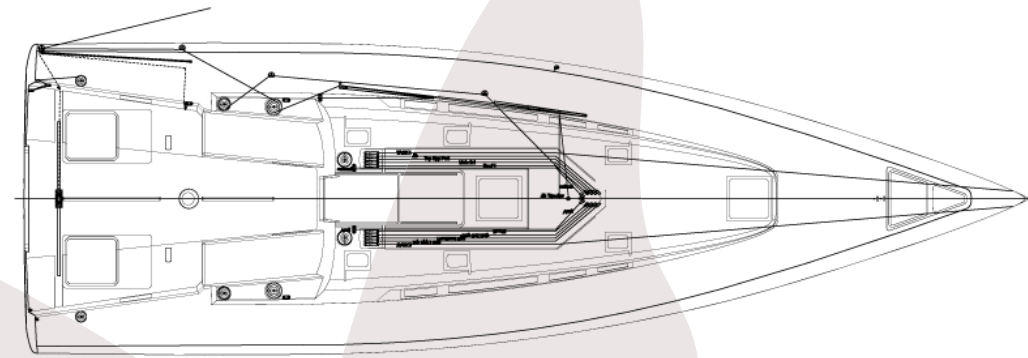
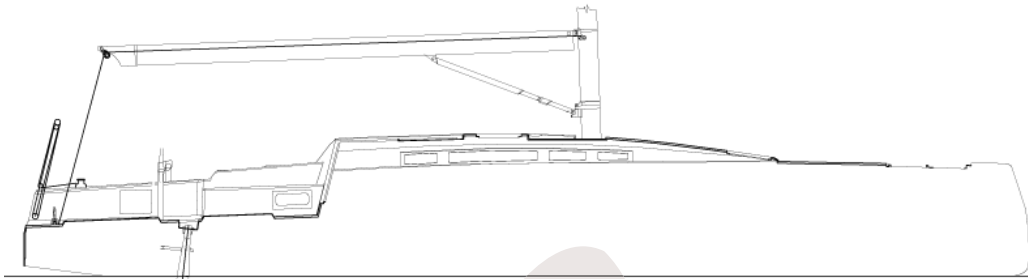


DECK DETAILS





OFFSHORE SAILING ATTITUDE



OFFSHORE SAILING ATTITUDE

- A **deck plan** designed by people who know what racing means
- A wide cockpit **comfortable** while cruising, **ergonomic** while racing
- On deck mast, on deck manouvers, to be safe & dry
- Waterproof bulkheads give Neo a massive **offshore sailing attitude**

OFFSHORE SAILING ATTITUDE

- Low profile cabin for a modern design
- Flush, curves, continuous windows
- Reverse bow keeping boat dry
- Concave sheerline for beam effect
- Composite stanchions and pulpits

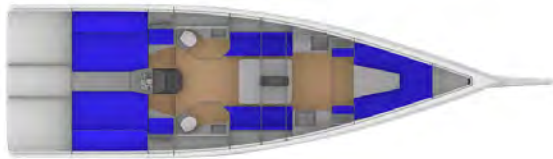


VERSIONS



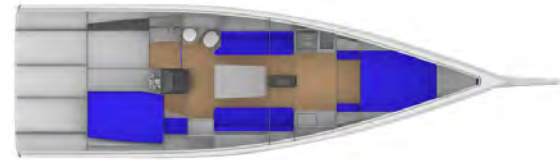
LOFT *THE CLEVER VERSION*

- Maximum living space under sail
- Long sailbags can be stored in the centerboard
- 3 pivoting beds for max stability in strong wind
- Great dining space for 10 people
- Perfect for dropping sails during the race
- Fast convertible in a big double bed cabin
- Navstation to be reversible to sofa



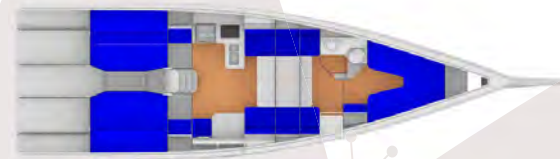
MODEL S *THE FAST CRUISER VERSION*

- 1 front owner cabin
- 2 large guest cabin
- 2 large bathrooms with shower
- 1 central dinette



SUPERCruise *THE COMFORTABLE VERSION*

- 1 front owner cabin
- 1 large guest cabin
- 1 bathroom
- 1 large separate shower
- 1 extra large service room/locker
- 1 central dinette
- Dinette sofa could have pivoting Beds



V BED *CONVERTIBLE OWNER CABIN*

- 1 large owner/Vbed front cabin
- 2 large guest cabin
- 1 bathroom
- 1 central dinette with 2 sofas convertible in beds

STRUCTURAL INTERIORS

RUDDER & KEEL AT YOUR NEEDS

- Deep draft for stability and upwind sailing ability
- Low draft for easy mooring
- Rudder and Keel are retractable without hydraulic
- Easy anchoring also in shallow waters
- Weldox keel fin and lead bulb all CNC machined
- hi aspect ratio carbon rudder to boost upwind ability

MORE SPACE INSIDE THAN A BIGGER BOAT

- Structural Interiors give our boats high structural rigidity with less weight and larger spaces inside

COMPOSITE INTERIORS

- Modern
- Efficient
- Easy to clean and long lasting











"redefine tailored excellence in sailing"

www.neoyachts.com -   YouTube NeoYachts - infotel: +39 342 01 27 910
info@neoyachts.com - technical@neoyachts.com - commercial@neoyachts.com

