

neo  350



neo   
yachts & composites

# YACHT DATA

## MEASURES & WEIGHT

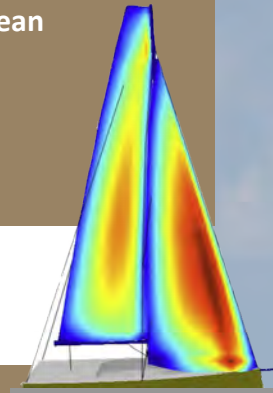
- Length (LOA): **10,80 mt**
- Beam (Bmax): **3,65 mt**
- Draft: **2,09 mt**
- Displacement: **4500 kg**
- CDL (ORC C CLASS): **9,68**

## ENGINE/OMOLOGATION

- Engine: **Saildrive 20 hp**
- CE Category: **A - Ocean**

## WATER & FUEL

- Water Tanks: **150 lt**
- Fuel Tanks: **60 lt**



# SAIL PLAN

## MEASURES & WEIGHT

- Sail Area Upwind: **71 m2**
- Sail Area Downwind (Gennaker): **160 m2**
- Sail Area Downwind (Spinnaker): **145 m2**
- Main Area: **40 m2**
- Jib Area: **31 m2**

- Asymmetric Spi Area: **120 m2**
- Symmetric Spi Area: **105 m2**
- Concept: **Neo Yachts**
- Builder: **Neo Yachts**
- Designer: **Ceccarelli Yacht Design**



**ceccarelli**  
yacht design and engineering

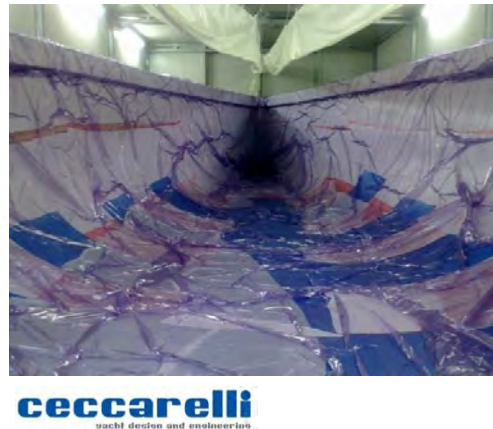
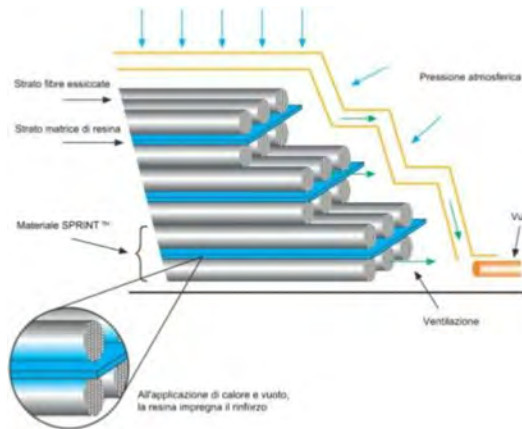


# CONSTRUCTION

neo  350

## ADVANCED FULL LIGHT FIBER GLASS CONSTRUCTION

- Direct female mould
- Infusion Technology
- Epoxi resin cured at 70°
- Multiaxial and unidirectional Fiber Glass
- A light and strong structure allows a light displacement yacht with
- Category A yacht engineered by "Ceccarelli yacht design and engineering"



neo   
yachts & composites

**neo**   
yachts & composites





neo  350

LTU-3111

neo   
yachts & composites



neo  350



neo   
yachts & composites





Full Carbon Tiller Version



## LIGHTER IS FASTER

### GRAN PRIX OPTIONS

- Upgrade to infused epoxy resin, carbon reinforcements and bulkheads (in the limits not to be considered in ORC or IRC), Corecell core , postcure at 65° of the finished yacht.
- Race electronics
- IRC and ORC Dedicated Keel
- All carbon Upgrade capable (Mast, Boom, Vang)
- Upgrade to composite pulpits and stanchions
- Peel ply raw look interiors (not painted)

neo  350




neo   
yachts & composites



neo  350



neo   
yachts & composites



neo  350

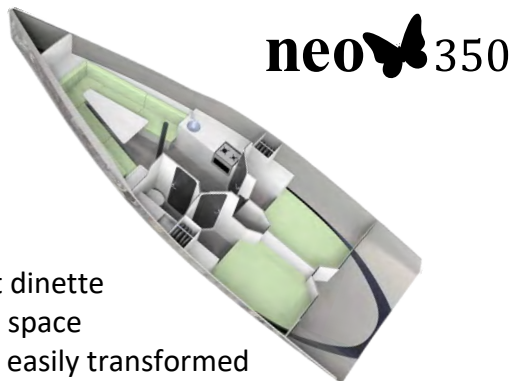


neo   
yachts & composites



## CRUISE A VERSION

- Full Interior
- 2 Double cabin
- 1 Big Bathroom
- Convertible front dinette with great dining space
- Dining Space can easily transformed in a double bed big cabin
- Possible Finishing wood veneer, carbon look and gloss paint



neo  350



## STANDARD B VERSION

- Full Interior
- 2 Double cabin
- 1 Pivoting berth per cabin allowing sleep up to 20°
- 1 Big Bathroom
- Convertible front dinette with great dining space
- Dining Space can easily transformed in a double bed big cabin
- Possible Finishing wood veneer, carbon look and gloss paint



neo   
yachts & composites



